

TAKE THESE STEPS IMMEDIATELY TO PREVENT FURTHER LOSS OF YOUR PROPERTY

Smoke Damage

- Immediately turn off heating and air conditioning system to prevent migration of soot and odor to the remainder of the dwelling. If you must use it, change the filter first.
- **DO NOT** let anyone touch or sit on soft goods (draperies, bedspreads upholstered furniture, etc...)
- Be sure house is securable.
- Call a professional to assist you.

Water Damage

- Turn off the source of water and call a repair service.
- Elevate all furniture, even upholstered furniture with skirts, on unstained wood blocks, (if wood gets wet, **DO NOT** oil it as it will allow water to escape from the wood.)
- Elevate all draperies that are near the floor, using clothes pins if possible.
- Remove all shoes, clay pots, magazines, papers or anything lying on the floor that might leave a stain.

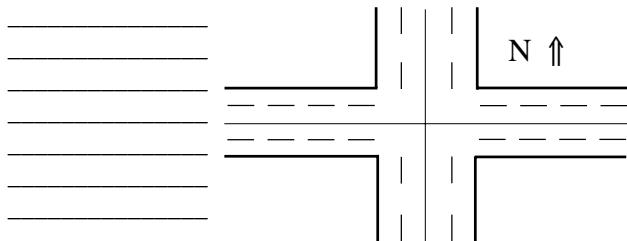
Vandalism

- Be sure house is securable.
- If water or smoke-damaged, follow steps listed above.
- If food has been thrown on furniture:
 - 1) Immediately remove it from wood or painted surfaces.
 - 2) Immediately call a professional for assistance if on fabrics.

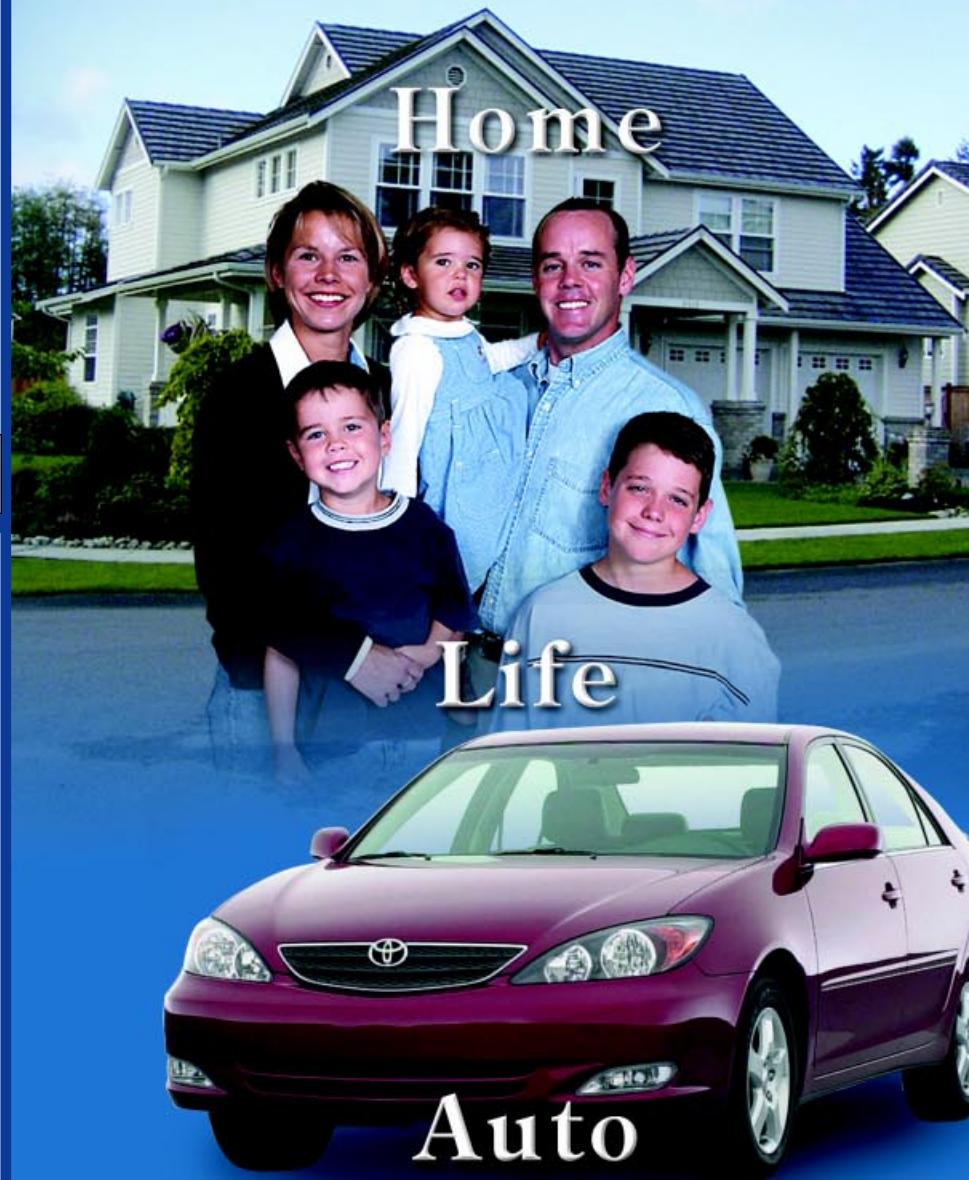
THIS FOLDER IS PROVIDED BY THESE LOCAL ADVERTISERS

In case of Accident Important Info

Drivers name: _____
 Phone # _____
 D.L. # _____
 Insurance Co. _____ Agent: _____
 Agents # _____
 Policy # _____
 Make & Model: _____
 Color: _____
 License Plate # _____
 Police Report # _____
 Officers Badge # _____
 Witness: _____
 Witness: _____
 Comments: _____



FARMERS
 "Gets You Back Where You Belong"



Steven Stroh
 Insurance Agency

• Auto • Home • Life • Business

Office: 909-384-1172 Fax: 909-384-8303

1364 Camino Real, #150 • San Bernardino, CA 92408